



# INDOFINE Chemical Company, Inc.

121 Stryker Lane, Bldg. 30, Suite 1 • Hillsborough, NJ 08844 • U.S.A.

Phone: (908) 359-6778 • FAX: (908) 359-1179

website: [www.indofinechemical.com](http://www.indofinechemical.com)

e-mail: [chemical@indofinechemical.com](mailto:chemical@indofinechemical.com)

## CERTIFICATE OF ANALYSIS

|                                    |  |
|------------------------------------|--|
| <u>Catalog Number:</u>             | 021691   |
| <u>Product Name:</u>               | <b>SYROSINGOPINE</b>   |
| <u>CAS Number:</u>                 | [84-36-6]  |
| <u>Lot Number:</u>                 | 1707836  |
| <u>Chemical Formula:</u>           | $C_{35}H_{42}N_2O_{11}$  |
| <u>Molecular Weight:</u>           | 666.72   |
| <u>Appearance:</u>                 | White crystalline powder   |
| <u>Loss on Drying:</u>             | 0.48%  |
| <u>Identification(MS&amp;NMR):</u> | Positive   |
| <u>Storage:</u>                    | Store in a cool, dry place<br>Keep away from strong light and heat |
| <u>Purity(HPLC):</u>               | 99.42%   |



# INDOFINE Chemical Company, Inc.

121 Stryker Lane, Bldg. 30, Suite 1 • Hillsborough, NJ 08844 • U.S.A.

Phone: (908) 359-6778 • FAX: (908) 359-1179

website: [www.indofinechemical.com](http://www.indofinechemical.com)

e-mail: [chemical@indofinechemical.com](mailto:chemical@indofinechemical.com)

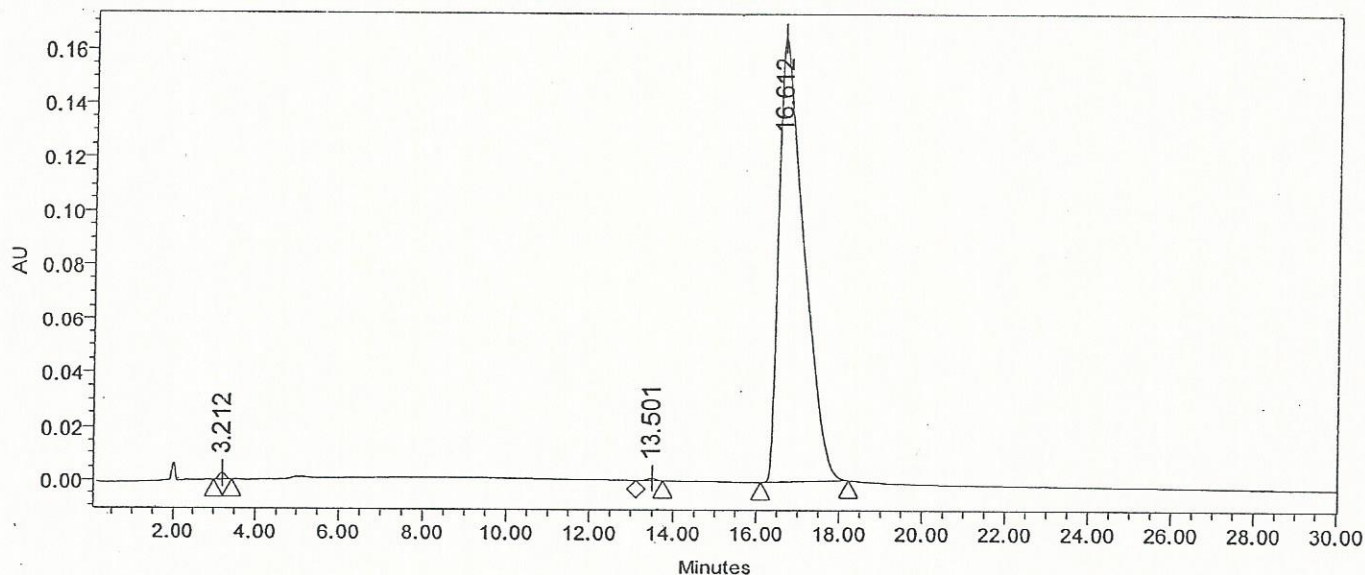
## HPLC ANALYSIS

Catalog No.: 021691  
Product Name: Syrosingopine  
Lot No.: 1707836

### SAMPLE INFORMATION

|                   |               |                     |               |
|-------------------|---------------|---------------------|---------------|
| Sample Name:      | Syrosingopine | Acquired By:        | System        |
| Sample Type:      | Unknown       | Sample Set Name:    |               |
| Vial:             | 4             | Acq. Method Set:    | Syrosingopine |
| Injection #:      | 1             | Processing Method:  | Syrosingopine |
| Injection Volume: | 10.00 ul      | Channel Name:       | 221.0nm       |
| Run Time:         | 30.0 Minutes  | Proc. Chnl. Descr.: | PDA 221.0 nm  |

### Auto-Scaled Chromatogram



### Peak Results

|   | Name | RT     | Area    | Height | % Area |
|---|------|--------|---------|--------|--------|
| 1 |      | 3.212  | 26203   | 2317   | 0.38   |
| 2 |      | 13.501 | 13996   | 851    | 0.20   |
| 3 |      | 16.612 | 6930172 | 164750 | 99.42  |

Mobile phase A: Methanol 55

Mobile phase B: 0.03% H<sub>3</sub>PO<sub>4</sub> Water 45

Flow rate: 0.8 ml/min

Column temp: 30°

Chromatographic column: Kromasil C18 150\*4.6 3.5um



# INDOFINE Chemical Company, Inc.

121 Stryker Lane, Bldg. 30, Suite 1 • Hillsborough, NJ 08844 • U.S.A.

Phone: (908) 359-6778 • FAX: (908) 359-1179

website: [www.indofinechemical.com](http://www.indofinechemical.com)

e-mail: [chemical@indofinechemical.com](mailto:chemical@indofinechemical.com)

Catalog No.: 021691  
Product Name: Syrosingopine  
Lot No.: 1707836

